

Image-Guided Abdominal Biopsy Phantom

Model 071



IDEAL FOR DEMONSTRATIONS AND VISUAL IDENTIFICATION OF NEEDLE PLACEMENT

The Model 071 Image-Guided Abdominal Biopsy Phantom is a simplified abdominal phantom suitable for training and demonstrating image-guided needle biopsy navigation tools or procedures that requires a constant visual reference for needle placement.

The phantom contains eleven randomly positioned lesions, with sizes ranging from 8 to 12 mm. It also includes one 25mm lesion (near the vertebrae), ribs and a simulated spine.

The lesions and spine are visible under ultrasound and CT. The solid polymer gel background is anechoic and will not leak when punctured.*

US Patent #5196343

Features

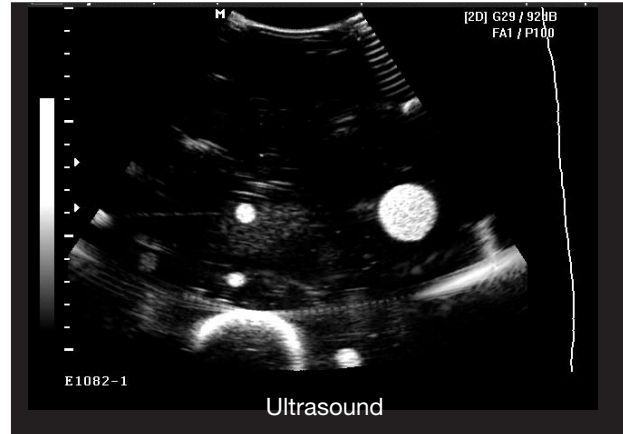
- Improve performance of freehand abdominal biopsies
- Test new equipment
- Validate automated biopsy systems
- Suitable for CT and ultrasound

2428 Alameda Avenue Suite 316 • Norfolk, Virginia 23513 • USA
Tel: 800.617.1177 • 757.855.2765 • Fax: 757.857.0523

WWW.CIRSINC.COM

CIRS

Tissue Simulation & Phantom Technology



SPECIFICATIONS

DIMENSIONS:	28 cm x 20 cm x 12.5 cm (11" x 7.9" x 4.9")
PHANTOM WEIGHT:	5.5 kg (12.1 lb)
MATERIALS:	<p>Background Material: Zerdine® Speed of sound: 1540m/s ± 10m/s</p> <p>Ribs & Vertebrae Material: Epoxy</p> <p>Scan Surface Material: Clear vinyl</p> <p>Masses Material: Zerdine, soft tissue Quantity: 11 Position: Random in background Diameter: 8 - 12mm</p> <p>Quantity: 1 Position: Placed near vertebrae Diameter: 25mm</p>

MODEL 071 INCLUDES

QTY	COMPONENT DESCRIPTION
1	Image-Guided Abdominal Biopsy Phantom
1	User Guide
-	6 Month Warranty

* It is important to understand that the Model 071 is a disposable product. Although the material can be punctured to demonstrate image-guided navigation technologies, a needle track may be evident after each puncture. To maximize the use of the phantom, CIRS recommends you use a 20 gauge needle or higher and that you avoid using the same approach for each lesion. Each mass can only withstand core biopsy until the lesion is destroyed.

